



PARUS

Plant Light



QUICK GUIDE

GUARANTEE CERTIFICATE AND USER INSTRUCTIONS

Model: iSUN Pole - 7W/10W

Thank you for choosing a PARUS Plant Light.

To ensure correct operation and performance this product has been carefully inspected and tested.

Terms of guarantee:

Your Plant Light is covered by a two-year limited guarantee.

This guarantee applies from the date of purchase shown on your receipt. In the event of a guarantee claim you should contact your retailer where the product was purchased.

This guarantee does not apply if the lamp has been:

- Connected to a dimmer (only approved for use with PARUS electronic timer and dimmer or the iSUN Intelligent controller.)
- Connected to a supply with the wrong voltage
- Used outside the recommended temperature range
- Subjected to mechanical damage, e.g. dropped
- Dismantled for troubleshooting or repair

Read the user instructions before you use this lamp.

Save the instructions for future reference.

Warning: Before you start using the light – read and follow these instructions:

- This lamp is not intended for outdoor use
- Temperature range: $-20^{\circ}\text{C} \pm 40^{\circ}\text{C}$
- Make sure your hands are dry before installing the lamp
- The lamp must be well ventilated; it must not be installed in a sealed enclosure
- Do not look directly at the lamp when it is switched on
- If you handle the transformer carelessly while connecting it you could get an electric shock.
- The shade of the lamp will get hot ($35^{\circ}\text{C} \pm 40^{\circ}\text{C}$) after a period of use. This is the normal operational temperature
- If electrical installation work is required to install the lamp, this has to be carried out by a qualified electrician
- Do not use the lamp if; it does not light up; if it starts flashing; or if it only produces weak illumination.
- In the event of a defect, turn off the lamp immediately. Never attempt to repair the lamp yourself as this could cause serious damage and voids the guarantee.

1. General

Many plants come from parts of the world where the daily rhythm and light intensity differ from those in our latitude. This means that the correct lighting is especially important when cultivating plants indoors. By using the PARUS Plant Light you can grow herbs and plants indoors and enhance the indoor environment at the same time.

2. Operation

A Plant Light consists of a light source (LED) that produces light in wavelengths that are chosen to encourage plants to grow and thrive. The iSUN has been developed to give your plants important supplementary lighting in the right wavelengths to make your favorite plants thrive and grow well.

3. Technical data

Model: iSUN-Pole Voltage: 90~240 V 50/60 Hz (transformer) Operating voltage of LED bulb: 24 V DC Light spread: 120° Power: 10 W Length of telescopic stand: 0.3–1.0 m Diameter of lampshade: 110 mm	Weight: 285 g with transformer and telescopic stand Cable length: 3.0 m PPFD* (300 mm): 44 μmol Luminous flux: 1,206 lumen IP class: IP 54 Lifetime: $\geq 25,000$ hours Light color: (Snow) White
---	--

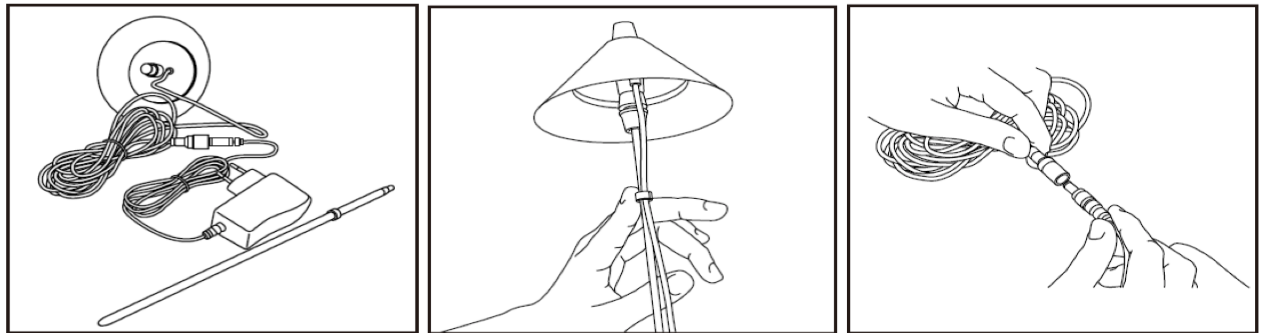
*PPFD is a measure of the useful photosynthetic radiation

Accessories / Options:

- Intelligent controller– electronic dimmer and timer intended for one iSUN lamp
- Intelligent Multi controller – electronic dimmer and timer intended for connecting up to five iSUN lamps

4. Assembly and installation

- Fit the telescopic stand to the bottom of the lampshade
- Fix the cable using the cable clamps so that it is secured to the stand
- Connect the cable to the transformer
- Plug the transformer into a wall socket. The telescopic stand is designed to be pushed into the soil next the pot plant or indoor tree that you want to illuminate. Adjust the stand so that the lampshade is approximately 20 cm above the plant.



5. Positioning

Position the lamp in a suitable location indoors where the indoor temperature is between 16 and 26°C. The ideal conditions for your plant are a well-ventilated area with a temperature of 18–24°C and humidity level of at least 50%.

6. Care and storage:

Store the lamp and packaging out of reach of children.
There are no user-serviceable parts inside the LED lamp.
Waste disposal: This lamp should be treated as electronic waste.

For more information please visit:
Voor meer informatie kunt u terecht op:
Für weitere Informationen, besuchen Sie bitte:
Pour plus d'informations s'il vous plaît visitez:
Para mayor información por favor visite:

www.parusplantlight.com