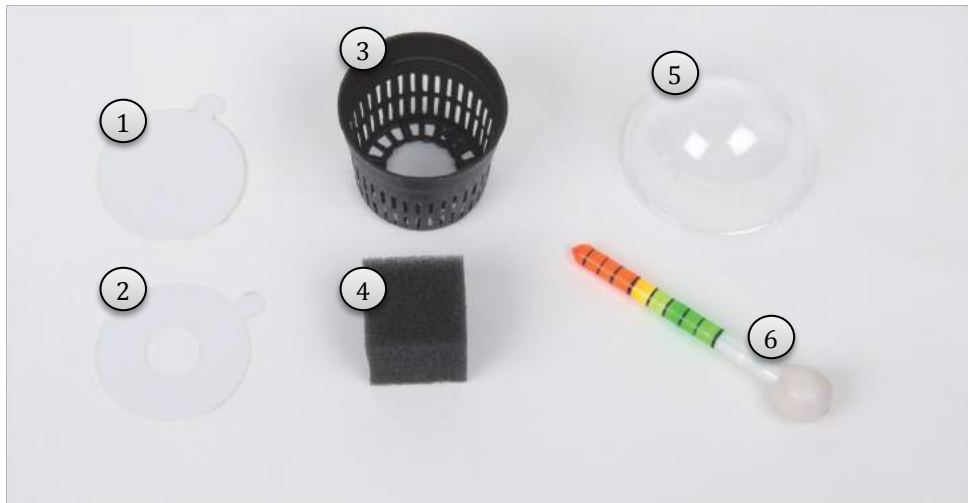




Mini Farm Growing Kit Manual



Components






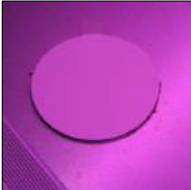
1. Reflect paper for germination: reusable
2. Reflect paper for germination when seedling is coming up: reusable
3. Net Pot: reusable
4. Sponge: 1 time use
5. Humid cap for seedling: reusable
6. Water level indicator

Water Preparation

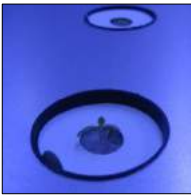


Tap water contains little to no nutritional value. Please consult your local garden shop what nutrient solution you can best use for your plants. Fill the Mini Farm tray with water and the nutrition according to the nutrition guidance measurements.




Planting Procedures:

<p>Prepare the seeds and soak them in to the water for 24 hours. Soaking them in water helps them to germinate easier.</p>	
<p>Prepare the sponge for germination. The sponge for germination has groove to let the roots come out easily. Put the sponges in to the water and repeat squeezing until the sponges absorbed water enough. You need to use the purified water or the tap water that was left in the air for about 24hours. Caution: If the sponges are not wet enough, the germination will not be coming in to action.</p>	
<p>Plant the seeds in the sponges. Plant 2 or 3 seeds in the wet sponges. Caution: If the seeds are too small (ex. Lettuce), do not plant the seeds too deep inside. Otherwise, the seeds will be rotten. Small seeds : 2mm ~ 3mm, Big seeds : 4mm~6mm</p>	
<p>Put the sponges in the Net pot, and cover them with reflect paper for germination. Reflect paper will block the lights to help the germination. Remove the reflect papers after 2~3 days, and replace them with the reflect paper for growing together with the humid cap.</p>	

Germinating Procedures:

<p>Germinating periods (2~3 days) Germination will be done in 2~3days since the seeds are planted and covered by the reflect paper. Caution: The germination may not arise, if the seeds are planted too deep in the sponges or the sponges don't absorb enough water.</p>	
<p>Rising seedling period (2 weeks) Remove the reflect paper after the germination is done. Instead of it, place the reflect paper for growing and cover with humid cap to maintain the humidity for healthy growth. If the germinated plants are more than 2~3, get rid of the weak plants and leave one healthy plant.</p>	
<p>During the rising seedling period, turn on the blue color lightings to grow them. The wavelength emitted from blue LEDs is ideal for healthy growth of the sprouts. Please remove the humid caps when the plants are about to touch the caps. Caution: Please turn off the LED lights before you remove the humid cap from the plants.</p>	

Harvesting Procedures:

<p>Preparing to harvest. You could cut off the leaves with scissors or hands. Otherwise, you also can just pull out the whole plant. During the harvest period, you can choose the lighting colors either blue or red. For thicker and healthy plants: Blue lighting For soft and crispy: Red lighting</p> <p>Every single kits (humid cap, reflect paper, net pot) are to be reused except the sponges.</p>	
<p>High concentration of liquid fertilizer and abnormal pH rate causes tip burn symptom. In this case, you need to add more water to reduce the concentration of the liquid fertilizer and turn down the strength of the LED lighting. If the liquid fertilizer is not applied enough, the leaves are going to be changed to yellow color. In this case, you need to add more liquid fertilizer as soon as possible, but the result will not appear immediately. In case the pests come up on the plants, pull out the whole net pot and rinse it with running water.</p>	

Proper placement

The setup should be placed in a suitable location indoor with a temperature between 16 and 26 degrees. The ideal environment is a temperature of 18 - 24 degrees, with a humidity of 50% and good air circulation.